

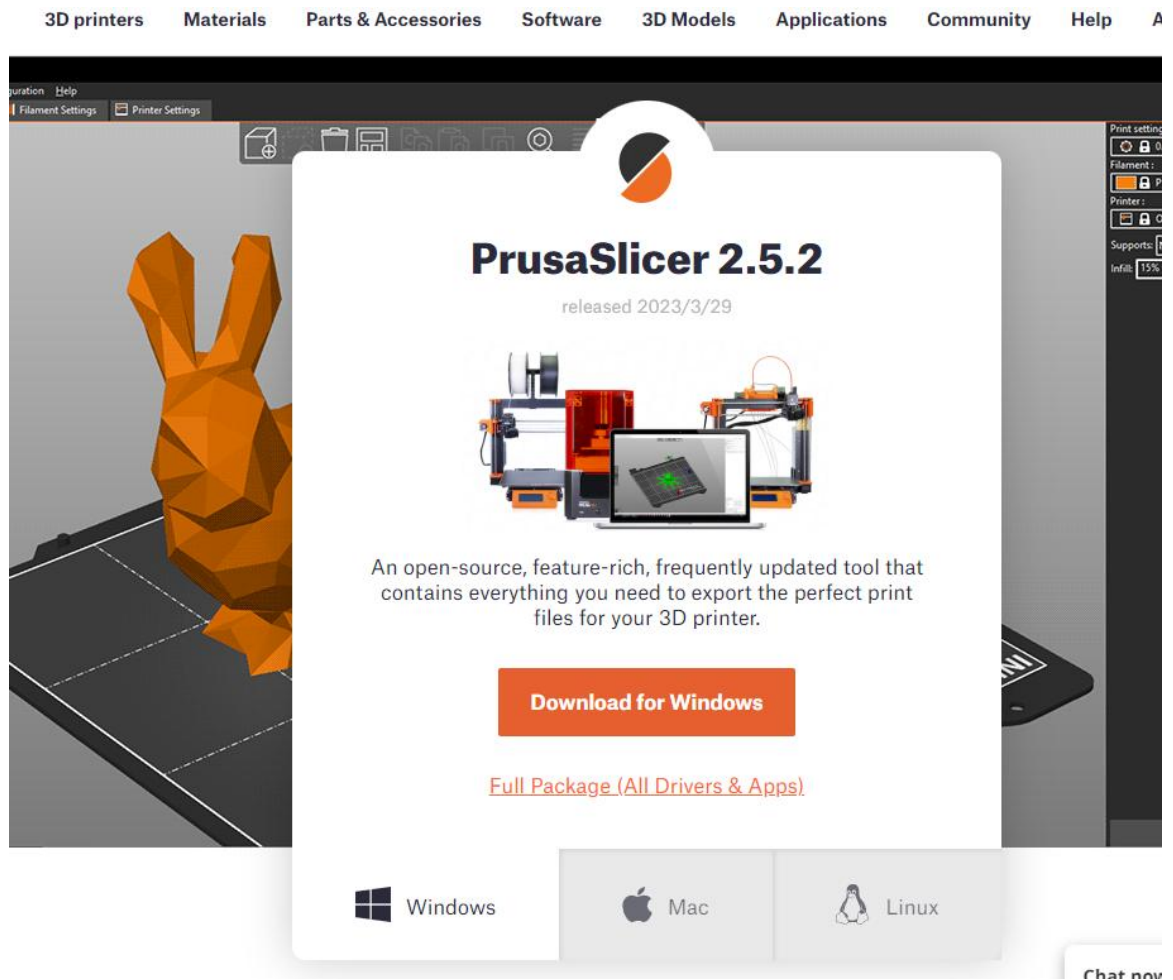
# PrusaSlicer Adapted to K1 Model Operation

## Manual

### 1. software download

PrusaSlicer download link:

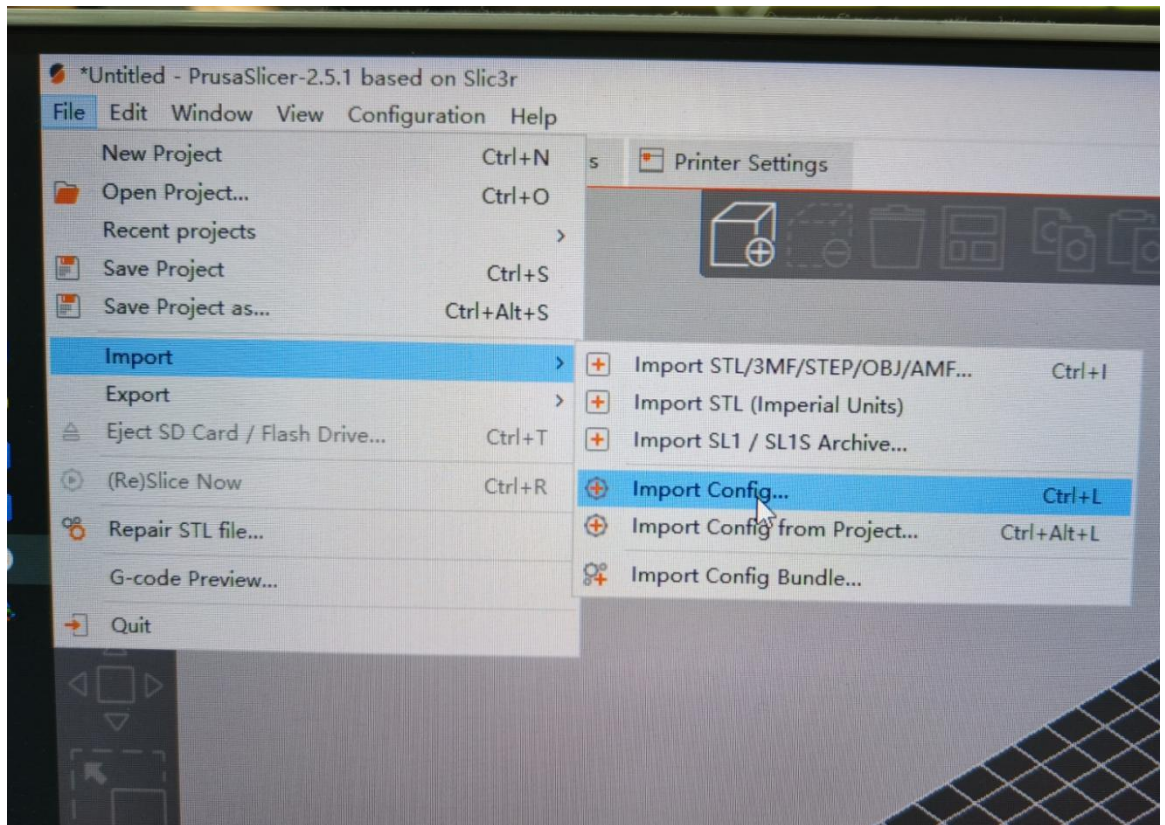
<https://www.prusa3d.com/page/prusaslicer-424/>



### 2. parameter import



After importing the configuration file, you can print according to the parameters

configured last time, of course, you can also reconfigure yourself on this basis



### 3.parameter file

We provide a relatively mature printing configuration file based on printing experience, and you can reconfigure it yourself based on your printing needs

名称	修改日期
 prusa-k1-config(2).ini	2023/4/26 13:46
 PrusaSlicer Adapted to K1 Model Op...	2023/4/26 13:51

